

Sage™ Systems

HIGH PRESSURE SANITIZING SYSTEMS



Construction:

Stainless steel frame, bracket, structure, and hardware.

Stainless Float tank with 1" air gap to prevent backflow.

Leeson commercial electric motor with manual reset thermal overload protection.

6 foot (1.8m) water inlet hose, with 3/4" garden hose thread.

Cat Triplex plunger pump.

Vacuum formed ABS cover.

All fluid handling components are brass, stainless, or high pressure hose.

Light 5/16" dia Spray hose, bright yellow, non-marking, with flex guards and 1/4" brass Quick Disconnect sockets at each end.

Ergonomic spray gun with stainless wand, heat insulating grip, and adjustable nozzle for low/high pressure and steam/spray.

Features:

Fully certified and listed as a pressure washer for commercial indoor use.

In-line water filter protects machine from debris.

Adjustable Unloader valve allows the unit to idle and recirculate when the spray gun is closed.

Pressure Relief Valve maintains a safe maximum pressure.

Thermal Relief Valve prevents recirculated water from overheating while idling by discharging 100ml of heated water and replacing it with cool water. Discharge occurs at 165°F.

Timeout function prevents pump or motor wear by shutting power off after machine idles and recirculates for 5 minutes. Machine power is easily reset at either the machine or the remote station

AutoChem Feature:

Automatically switch from chemical To rinse at spray gun, by switching The nozzle from low to high pressure.

Note: Chemicals are ONLY applied at low pressure (about 1/10 of machine maximum rated pressure).

Item: _____
 Project: _____
 Product: Sage Central System
 Model: SRW- _____ - _____ - _____

06	0	1	03	N
08	1	2	05	R
10	2	3	07	
	3		10	

1. Pick a Pressure

- 06 = 600 psi (41 bar) maximum
- 08 = 800 psi (55 bar) maximum
- 10 = 1000 psi (69 bar) maximum

2. Pick a Chemical Injection Method

- 0 = Soap and Sanitize, Gravity fed (solenoid)
- 1 = Soap and Sanitize, Pump fed (peristaltic)
- 2 = Soap only, Gravity fed (solenoid)
- 3 = Soap only, Pump fed (peristaltic)

3. Pick a Power Supply

- 1 = 115 Volt, 60 Hertz
- 2 = 230 Volt, 50 Hertz
- 3 = 230 Volt, 60 Hertz

4. Pick a Hose Length

- 03 = 30 feet (9.1 meters)
- 05 = 50 feet (15.2 meters)
- 07 = 75 feet (22.9 meters)
- 10 = 100 feet (30.5 meters)

5. Optional Suffixes

- N = No other options
- R = Stainless Manual Hose Reel (up to 75' of hose)

Options:

Solenoid Valve

Opens on demand to allow siphon action of pump to pull chemical into system with gravity's help at adjustable mix ratio.

Peristaltic Pump

Pulls chemicals against gravity or over longer distances. Meters chemicals to specific, adjustable mix ratios. (230 Volt machines use a diaphragm pump with similar features).

Manual Hose Reel

Stainless Steel reel for installation at machine or remote station Holds up to 75 feet of hose. Keeps work site neat and organized.

Remember:

Specify the Master Control Panel to match the machine voltage. This panel controls the remote system electronics. Remote Stations specify up to 10 remotes anywhere within 300 feet of the machine. Each remote has power control and chemical selection.

See separate SR- specification sheets for Master Control Panel and Remote Stations.

Specifications

06 Models

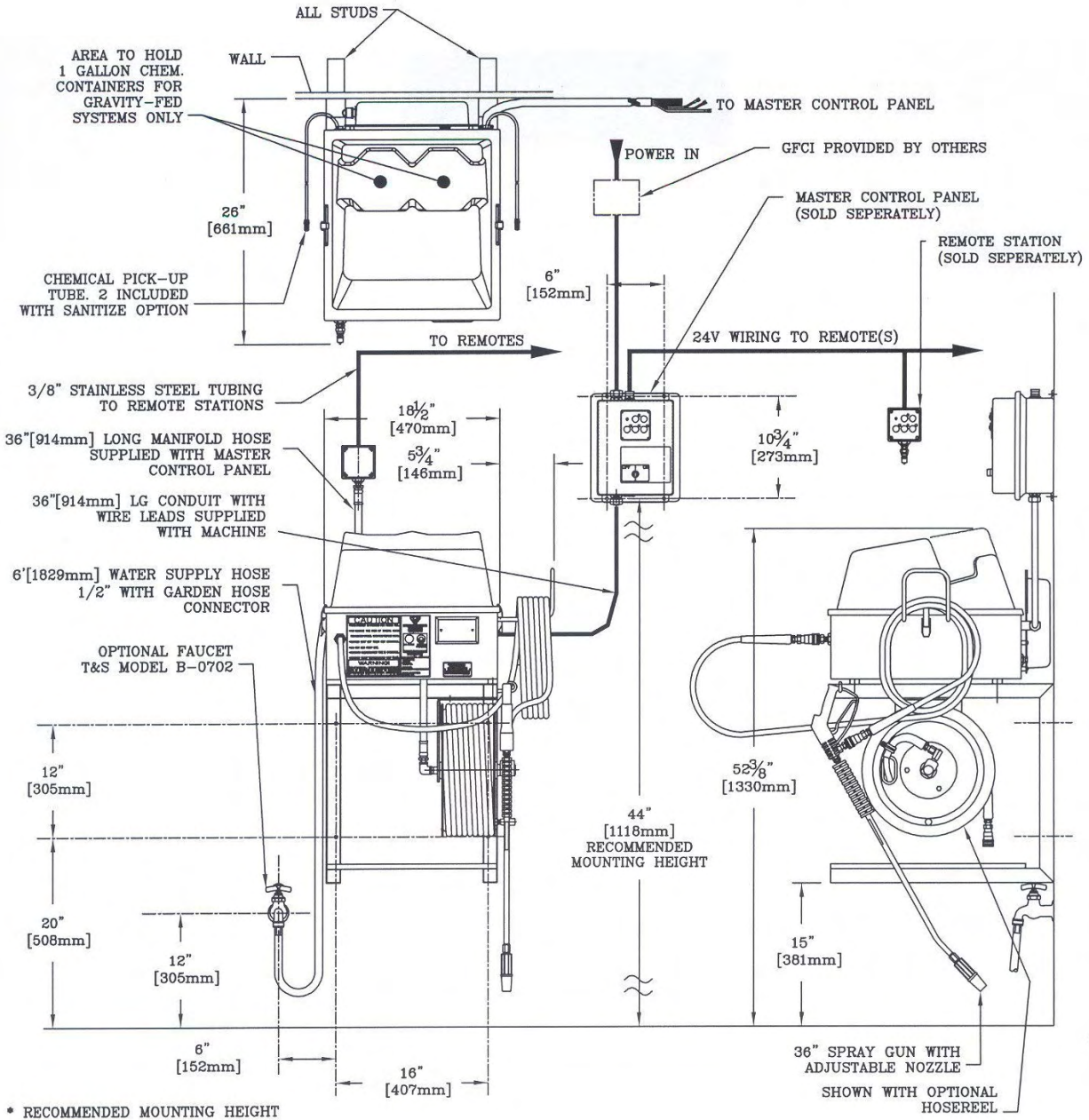
600 PSI (41 bar)
2.9 gpm (11.0 lpm)
1.5 HP motor
12 AMPS @ 115 Volts

08 Models

800 PSI (55 bar)
2.9 gpm (11.0 lpm)
2.0 HP motor
15 AMPS @ 115 Volts

10 Models

1000 PSI (69 bar)
2.9 gpm (11.0 lpm)
2.0 HP motor
18 AMPS @ 115 Volts



Master Distributors

USA & Canada

Market Equipment & Repair
7300 Quimby St. Paramount, CA 90733. USA
Tel: +1 562 529 5494 Fax: +1 562 529 5310
Email: nick@marketequipmentrepair.com
Web: www.marketequipmentrepair.com

United Kingdom

Sage Sanitizing Systems
Unit 4, Cheney Manor Industrial Estate
Swindon, Wiltshire, England SN2 2UD
Tel: + (0)1793 603487 Fax: + 44 (0)1793 603489
Email: sagesales@sagesanitizingsystems.com
Web: www.sagesanitizingsystems.com

Sage™ Systems

HIGH PRESSURE SANITIZING SYSTEMS

Worldwide Manufacturing Facility

Sage Sanitizing Systems
Unit 4, Cheney Manor Industrial Estate
Swindon, Wiltshire, England SN2 2UD
Tel: + (0)1793 603487 Fax: + 44 (0)1793 603489
Email: sagesales@sagesanitizingsystems.com
Web: www.sagesanitizingsystems.com

Master Distributors

Middle East

D & S Exports Inc
24 Broad Street, Norwalk, CT 06851. USA
Tel: +1 203 847 6446 Fax: +1 203 849 9526
Email: s.straut@dsusa.net
Web: www.dsusa.net

South Asia and Pacific Rim

D & S Exports Pure Support SDN BHD
29-6 Block F2, Jalan PJU 1/42A, Dataran Prima,
47301 Petaling Jaya, Selangor Darul Ehsan, MALAYSIA
Tel: 603 7880 5758 Fax: 603 7880 5760
Email: puresup@dsusa.net
Web: www.dsusa.net