

Sage Systems™

HIGH PRESSURE SANITIZING SYSTEMS

DESIGN GUIDE



Mobile



Wall Mounted



Central Systems

The quality behind the system



Sage™ Systems

HIGH PRESSURE SANITIZING SYSTEMS

Welcome

For over 40 years Sage™ Systems have been leading the world in the manufacture of High Pressure Sanitizing Systems.

A commitment to continual product development to reflect the ever-changing needs and demands of both the customer and legislative requirements has led Sage™ Systems to be regarded as the # 1 Sanitizing System available on the market.

Sage™ Systems products are renowned for their reliability, versatility and durability with over ten thousand units being manufactured since our inception in 1964, many of which are still in use today.

Sage™ Systems - a Sanitizing System that will perform day after day, year after year.

Lee Llewellyn
Managing Director

Sage™ The Innovator of Foodservice Sanitizing Systems

The quality behind the system



**Sanitizing Begins with
Sage™ Systems**

www.sagesanitizingsystems.com

Sage Specification Table Instructions **Remote Systems**

For your guide, use the Sage Specification Table on the following pages. This table outlines machine features and options, accessories to customize the system, and necessary installation components. Follow through the Table systematically, paying special attention to note areas.

Remote Machine

Remote Machines **1** begin with SRW, for Sage Remote Wall. Use the Table to specify all machine features and options. Each choice fills into the space above to construct the final Sage model number.

For Example: SRW-0811-05R is a Sage Remote Wall at 800 psi (55 bar) with two chemical pumps, for soap and sanitize, for 115 Volt 60 Hertz power, with 50' (15 m) of high pressure hose on a Reel.

NOTE: If you choose a Remote Machine, you MUST select a Master Control Panel and appropriate Remote Panel(s).

Master Control Panel & Manifold

The Master Control Panel **2** powers the machine, and transforms the power down to a safe 24 Volt for the remote network. Specify the same voltage as the Remote Machine, and a key-lock main power switch if preferred. The Manifold **2a** attached a high pressure hose from the machine to the high pressure stainless Tubing network.

Remote Panel(s)

The Remote Panel **3** allows people in different areas of one facility to operate the central machine one panel at a time. Each Remote Panel controls power and chemical selection. Specify up to 10 Remote Panels for each machine, with no Remote Panel more than 300' (91 m) from the machine. The stainless Cover with Lock option is recommended for outside or vandal prone installations.

Remote Panel Accessories

Remote accessories finish customizing the system. Either a High Pressure Hose **4** on Hose Hanger **6**, or a Hose Reel **5** give access to the pressurized network. Specify additional Spray Gun Assemblies **7** for remote stations based on machine power and pressure.

Installation Supplies

Electrical: Remote Wallmount systems require one 20 amp appliance circuit of the specified voltage and frequency (i.e. 115V 60Hz) wired directly to the Master Control Panel. The use of a GFCI, Ground Fault Circuit Interrupter **20** on the incoming power line is required and essential to personal safety, though not provided.

All Remote Panels are wired to the Master Control Panel, in series or parallel, with 12 conductor Wire **9**. Terminal blocks in the Master Control Panel and wire nuts in the Remote Panels are already included.

Plumbing: All machines require a water connection through a Sill Faucet **8** with shut off ability and a 3/4" garden hose thread outlet. The machine requires a minimum of 4.0 gpm (15 lpm) at no less than 30 psi (2 bar). The maximum water temperature should never exceed 160°F (71 C).

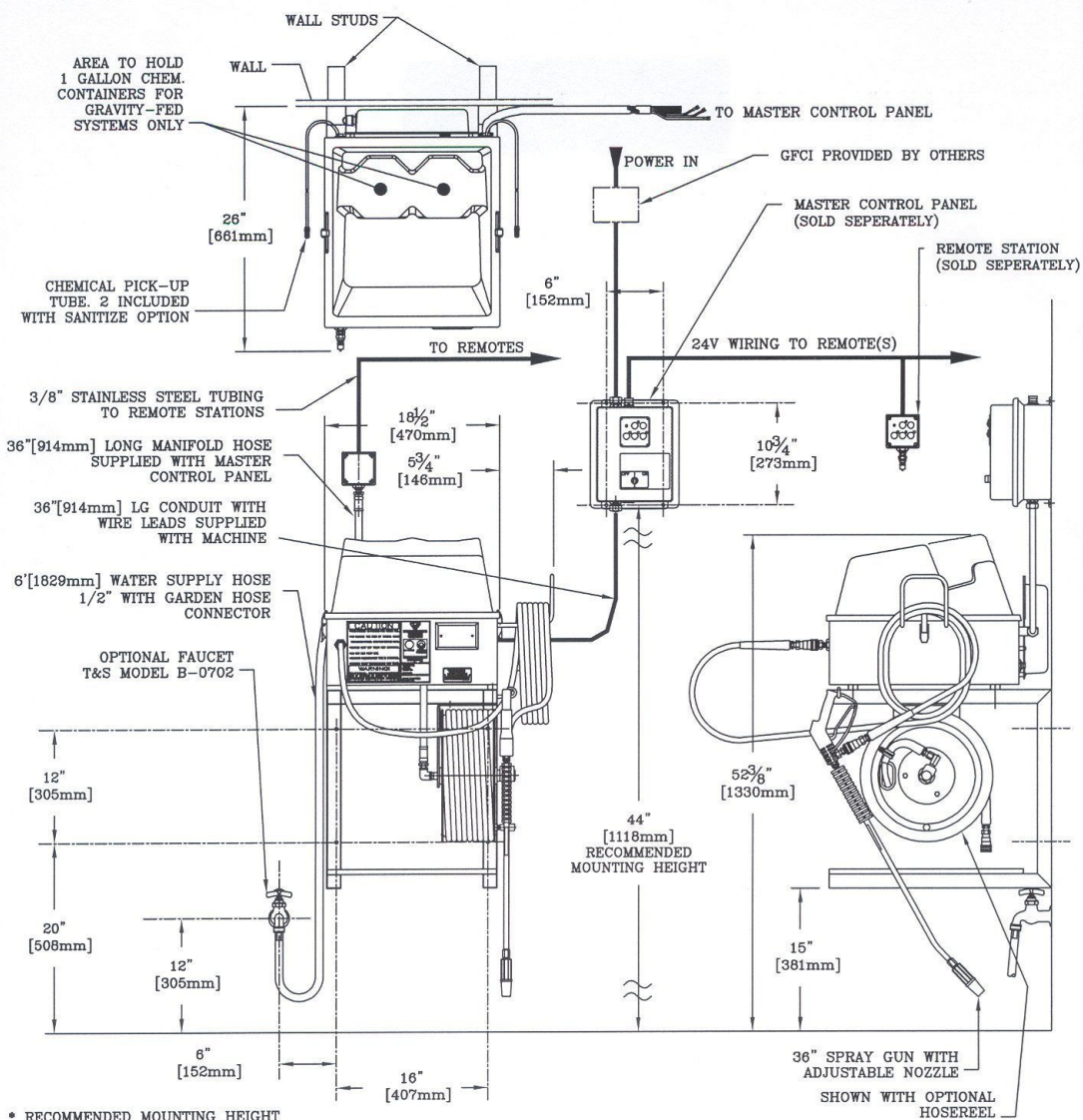
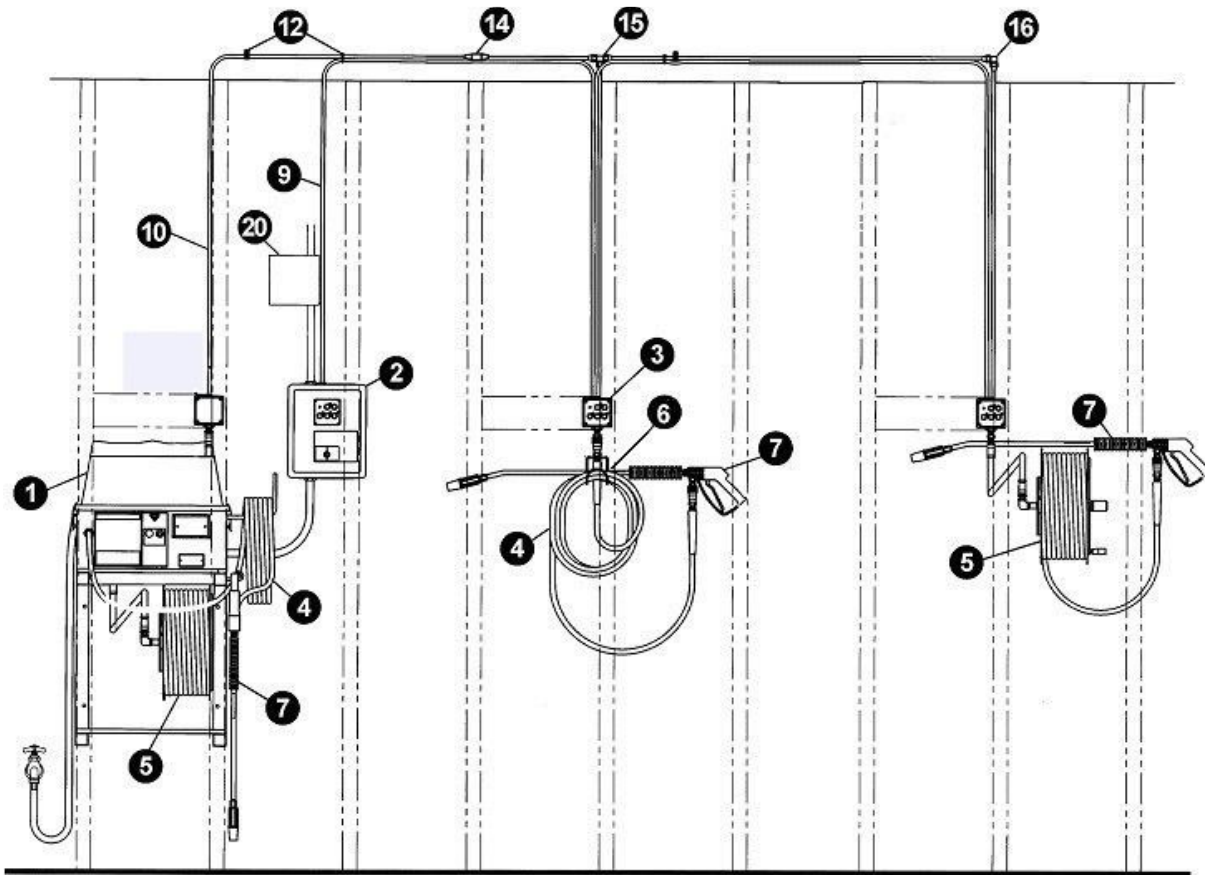
All Remote Panels are plumbed to the Manifold **2a** at the central machine, in series or parallel, with stainless steel Tubing **10**. The stainless Tubing is flared at installation to mate with the Remote Panel or Manifold. A Flaring Tool **13** and Flare Fittings **14** **15** **16** provide flexibility when constructing the optimal network for each facility.

Other: Typically, the Wire and Tubing run together behind the wall and across the ceiling between the Machine and the Remote Panels. However, a Spacer Block **11** is available for installation where the Tubing and wire will run in conduit external to the wall.

The stainless Tubing should be clamped to the building's structure and the Wire should be tied to the tubing every 3'-4' (90cm-120cm). The Clamp and Tie Pack **12** includes 15 of each, enough for 50' (15 m) of tubing and wire.

refers to the index number in the Specification Table and/or the balloon number on the Installation Schematic.

Sage Specification Schematic Remote Systems



Specification Table

Remote Systems

	Part Number	Description	Qty	Wt. (lbs.)	Total Wt.	
1	Sage Machine Specs SRW	SRW- - - -	<i>See separate spec and price list for model or pricing details.</i>			
		Pres.	08	800 psi (55bar) - Variety of indoor and outdoor surfaces, remote networks		
			10	1000 psi (69bar) - Outdoor or stubborn areas		
		Chemical	0	Gravity, Soap & Sanitize - Two Solenoid valves for injection of two chemicals		
			1	Pump, Soap & Sanitize - Two Peristaltic pumps for injection of two chemicals		
			2	Gravity, Soap only - One Solenoid valve for injection of only one chemical		
			3	Pump, Soap only - One Peristaltic pump for injection of only one chemical		
		Power	1	115 Volt, 60 Hertz - GFI plug on 35 feet (10.7 meters) of cord		
			2	230 Volt, 50 Hertz - GFI on 35 feet (10.7 meters) of cord. Denote country or specific plug.		
			3	230 Volt, 60 Hertz - GFI plug on 35 feet (10.7 meters) of cord		
Options	Hose	03	30 feet (9 meters) high pressure Hose with Spray Gun assembly			
		05	50 feet (15 meters) high pressure Hose with Spray Gun assembly			
		07	75 feet (23 meters) high pressure Hose with Spray Gun assembly			
		10	100 feet (30 meters) high pressure Hose with Spray Gun assembly			
		N	No options			
		R	With Hose Reel, stainless steel. Available in any hose length, except 100 feet (30 meters).			
With a Remote Machine, you MUST select a Master Control Panel and appropriate Remote Panel(s).						
2	Master Control Panel	Master Control Panel	<i>Powers Machine and Remote Network. Allows power control and chemical selection from Remote Panels. Optional Key Lock switch allows only authorized personnel to ready machine and system.</i>			
		SR-0101-N	115 Volt, no options			
		SR-0102-N	230 Volt (50 and 60 Hertz), no options			
		SR-0101-L	115 Volt, Key Lock Master Power switch			
		SR-0102-L	230 Volt (50 and 60 Hertz), Key Lock Master Power switch			
3	Remote Panel Spec SR-02	Remote Panel	<i>Remote power & chemical selection, up to 10 Remote panels within 300 feet (91 meters) of Machine. Connect to Machine Manifold with stainless Tubing, and to Master Control Panel with 12 conductor Wire.</i>			
		SR-0201	Exposed wall mount panel			
		SR-0202-L	Exposed wall mount panel, locking stainless Cover			
4	Hose, High Pressure	<i>High pressure hose with 1/4" brass Quick Disconnect sockets at each end.</i>				
		533600-45	High pressure Hose, 30 feet (9 meters) long			
		536000-45	High pressure Hose, 50 feet (15 meters) long			
		539000-45	High pressure Hose, 75 feet (23 meters) long			
		531200-45	High pressure Hose, 100 feet (30 meters) long			
5	Hose Reel	<i>Hose Reel, stainless steel, connects to machine or Remote Panel. Any hose length except 100 feet (30 meters).</i>				
		592117-45	Reel with Hose, 30 feet (9 meters) long			
		592115-45	Reel with Hose, 50 feet (15 meters) long			
		592118-45	Reel with Hose, 75 feet (23 meters) long			
6	Other Hose Accessories	512051-45	Hose Hanger, stainless, wall mount.			
7	Spray Gun Assembly	<i>Commercial gun, 1/4" stainless wand, adjustable nozzle for hi/low pressure and stream/spray. Write in preferred length. Distributor completes Part Number</i>				
		592 -45	_____ Hertz, _____ psi (_____ bar), _____ inches (_____ cm) long			
8	Sill Faucet	<i>3/4" Garden Hose thread outlet, single temperature faucets.</i>				
		B-0702	1/2" IPS female inlet, 4 arm handle			
		B-0704	1/2" IPS male inlet, 4 arm handle			
		B-0730-POL	1/2" IPS female inlet, loose key handle			
9	General Machine Accessories	525295-45	Wire, 250 feet (76 meters), 12 conductor, 18 AWG color coded. Connect Master Control Panel to Remote Panels, series or parallel			
		541400-45	Stainless welded Tubing, 50 feet (15 meters), 3/8" (9.5mm) OD. Connects Machine Manifold to Remote Panels, series or parallel.			
		500006-45	45 degree Flaring Tool, 3/16" to 5/8" (5mm to 16mm) stainless tubing.			
		512035-45	Spacer Block, to run tubing and wire outside wall in conduit. One for Machine Manifold and for each Remote Panel.			
		541255-45	Pack, 15 tubing Clamps, 15 wire Ties, for 50 feet (15 meters) of Tubing.			
		Flare Fittings				<i>Flare fittings for 3/8" (9.5mm) tubing, with flare nuts.</i>
		538785-45	Union flare fitting, connect straight tubing			
		538775-45	Tee flare fitting, tee tubing down to Manifold or Remote Panel			
		539015-45	Elbow flare fitting, turn tubing down to Manifold or Remote Panel			
		System Totals Add all Total Weight Values				

Sage Specification Table Instructions Stand-alone Machines

Stand-alone Machines **1** begin with SW for Sage Wall on a bracket, or SM for Sage Mobile on a cart. First, use the table to choose machine mount. Second, select all features and options. Each choice fills into the space above to construct the final Sage model number.

Electrical: Stand-alone Wallmount and Mobile systems require one 20 amp appliance circuit of the specified voltage and frequency with a standard receptacle for the chosen power. Sage Systems supplies a GFCI 20 with stand-alone systems on the Machines power cord.

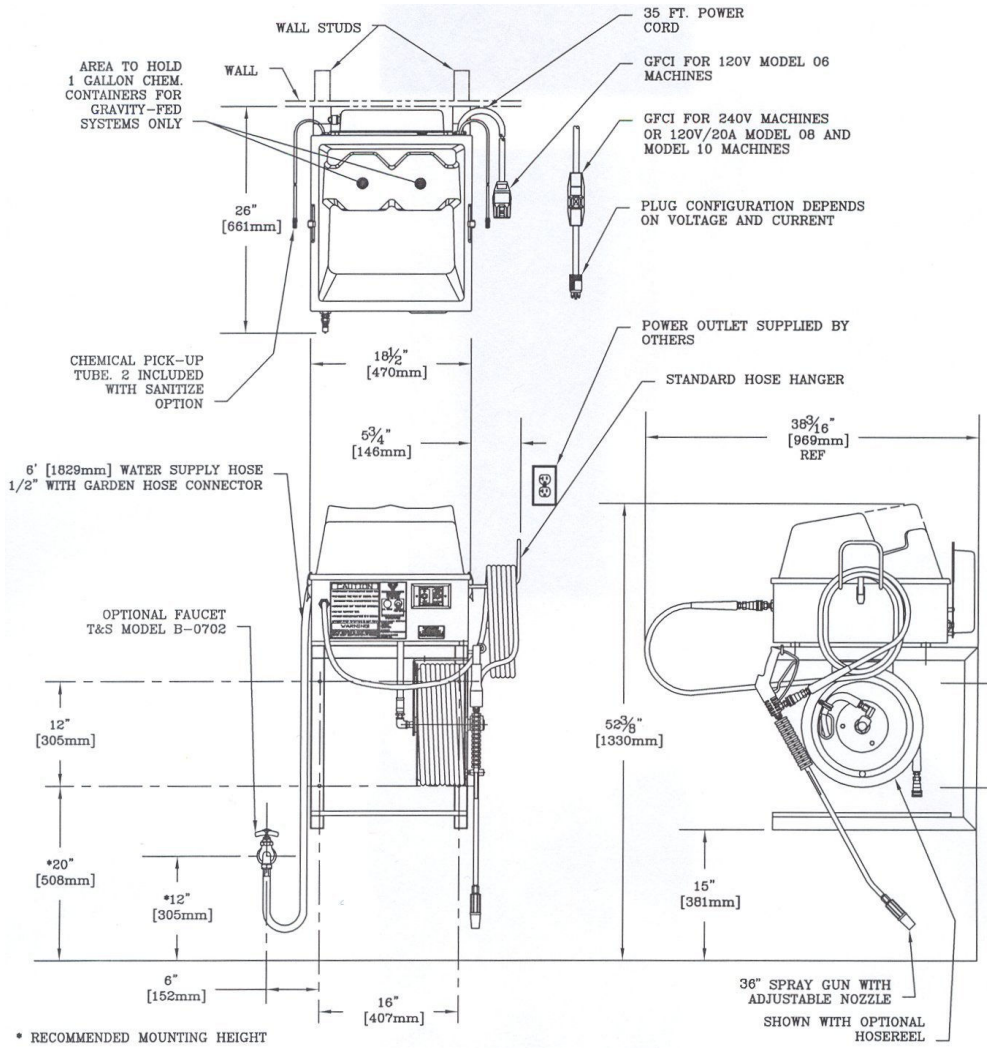
Plumbing: All machines require a water connection through a Sill Faucet **8** with shut off ability and a 3/4" garden hose thread outlet. The Machine requires a minimum of 4.0 gpm (15 lpm) at no less than 30 psi (2 bar). Maximum water temperature should never exceed 160°F (71 C).

Specification Table

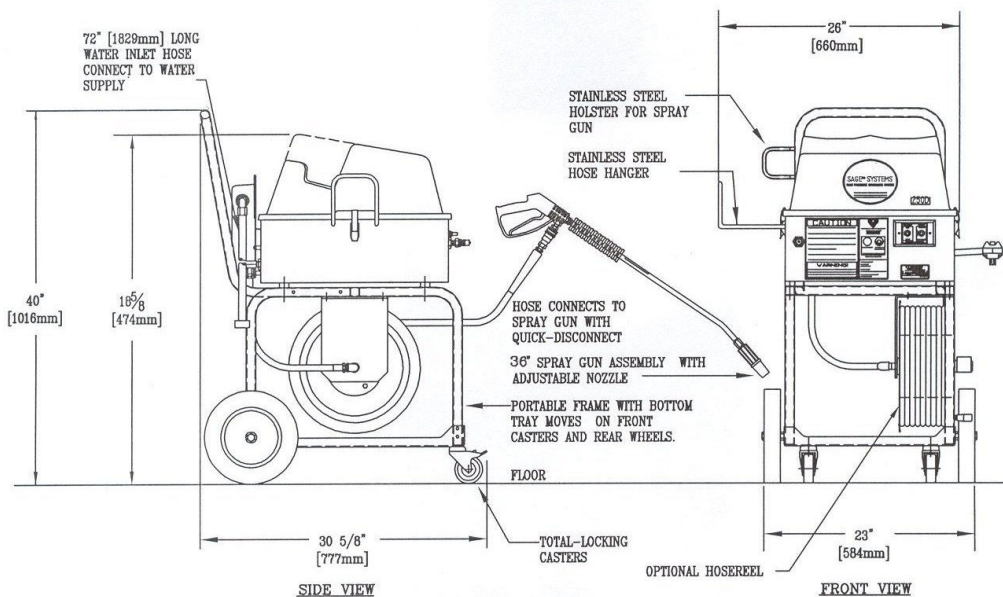
	Part Number	Description	Qty	Wt. (lbs.)	Total Wt.
1	S - - - - -	<i>See separate spec and price list for model or pricing details.</i>		175.0	
Sage Machine Specs SW, SM	M	M - Mobile mount, on a stainless steel cart with commercial castors			
	W	W - Wall mount, on a stainless steel wall bracket			
	06	600 psi (41bar) - Indoor use, sensitive flooring, walls, equipment			
	08	800 psi (55bar) - Variety of indoor and outdoor surfaces, remote networks			
	10	1000 psi (69bar) - Outdoor or stubborn areas			
	0	Gravity, Soap & Sanitize - Two Solenoid valves for injection of two chemicals			
	1	Pump, Soap & Sanitize - Two Peristaltic pumps for injection of two chemicals			
	2	Gravity, Soap only - One Solenoid valve for injection of only one chemical			
	3	Pump, Soap only - One Peristaltic pump for injection of only one chemical			
	1	115 Volt, 60 Hertz - GFI plug on 35 feet (10.7 meters) of cord			
	2	230 Volt, 50 Hertz - GFI on 35 feet (10.7 meters) of cord. Denote country or specific plug.			
	3	230 Volt, 60 Hertz - GFI plug on 35 feet (10.7 meters) of cord			
	03	30 feet (9 meters) high pressure Hose with Spray Gun assembly			
	05	50 feet (15 meters) high pressure Hose with Spray Gun assembly			
	07	75 feet (23 meters) high pressure Hose with Spray Gun assembly			
10	100 feet (30 meters) high pressure Hose with Spray Gun assembly				
N	No options				
R	With Hose Reel, stainless steel. Available in any hose length, except 100 feet (30 meters).				
Installation Supplies Spec SM, SW	Sill Faucet	3/4" Garden Hose thread outlet, single temperature faucets.			
8	B-0702	1/2" IPS femail inlet, 4 arm handle		2.0	
8	B-0704	1/2" IPS mail inlet, 4 arm handle		2.0	
8	B-0730-POL	1/2" IPS femail inlet, loose key handle		3.0	
Other Hose Accessories					
9	512051-45	Hose Hanger, stainless, wall mount.		2.3	
System Totals			<i>Add all Total Weight Values</i>		

Sage Specification Schematic

Stand-alone Machines



Wallmount Machine



Mobile Machine

